



FOXP3 Polyclonal Antibody

Catalog No	YP-Ab-02246
Isotype	IgG
Reactivity	Human;Mouse;Rat;Pig
Applications	WB;IHC;IF;ELISA
Gene Name	FOXP3
Protein Name	Forkhead box protein P3
Immunogen	The antiserum was produced against synthesized peptide derived from the C-terminal region of human FOXP3. AA range:381-430
Specificity	FOXP3 Polyclonal Antibody detects endogenous levels of FOXP3 protein.
Formulation	Liquid in PBS containing 50% glycerol, 0.5% BSA and 0.02% sodium azide.
Source	Polyclonal, Rabbit,IgG
Purification	The antibody was affinity-purified from rabbit antiserum by affinity-chromatography using epitope-specific immunogen.
Dilution	WB: 1/500 - 1/2000. IHC-p: 1/100-1/300. ELISA: 1/20000.. IF 1:50-200
Concentration	1 mg/ml
Purity	≥90%
Storage Stability	-20°C/1 year
Synonyms	FOXP3; IPEX; JM2; Forkhead box protein P3; Scurfin
Observed Band	47kD
Cell Pathway	Nucleus . Cytoplasm . Predominantly expressed in the cytoplasm in activated conventional T-cells whereas predominantly expressed in the nucleus in regulatory T-cells (Treg). The 41 kDa form derived by proteolytic processing is found exclusively in the chromatin fraction of activated Treg cells (By similarity) .
Tissue Specificity	
Function	disease:Defects in FOXP3 are the cause of immunodeficiency polyendocrinopathy, enteropathy, X-linked syndrome (IPEX) [MIM:304790]; also known as X-linked autoimmunity-immunodeficiency syndrome. IPEX is characterized by neonatal onset insulin-dependent diabetes mellitus, infections, secretory diarrhea, thrombocytopenia, anemia and eczema. It is usually lethal in infancy.,function:Probable transcription factor. Plays a critical role in the control of immune response.,online information:FOXP3 entry,online information:FOXP3 mutation db,similarity:Contains 1 C2H2-type zinc finger.,similarity:Contains 1 fork-head DNA-binding domain.,
Background	The protein encoded by this gene is a member of the forkhead/winged-helix family of transcriptional regulators. Defects in this gene are the cause of immunodeficiency polyendocrinopathy, enteropathy, X-linked syndrome (IPEX),



also known as X-linked autoimmunity-immunodeficiency syndrome. Alternatively spliced transcript variants encoding different isoforms have been identified. [provided by RefSeq, Jul 2008],

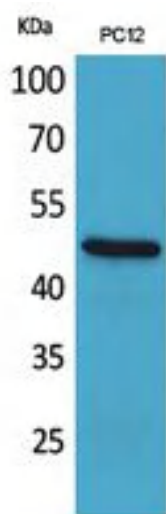
matters needing attention

Avoid repeated freezing and thawing!

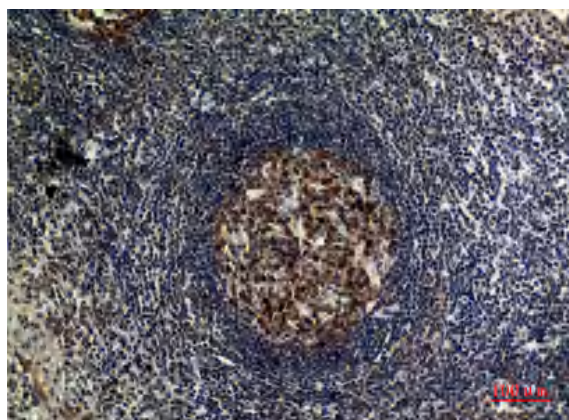
Usage suggestions

This product can be used in immunological reaction related experiments. For more information, please consult technical personnel.

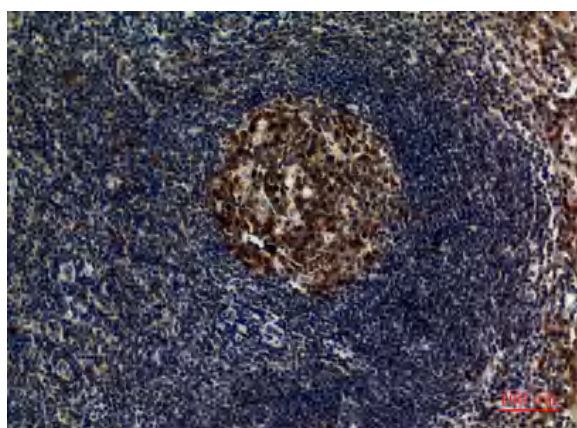
Products Images



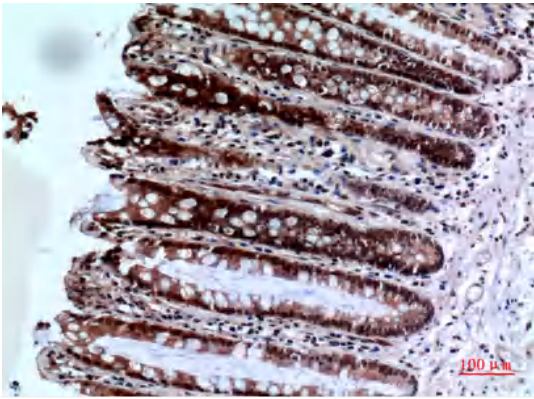
Western Blot analysis of PC12 cells using FOXP3 Polyclonal Antibody. Secondary antibody(catalog#:RS0002) was diluted at 1:20000



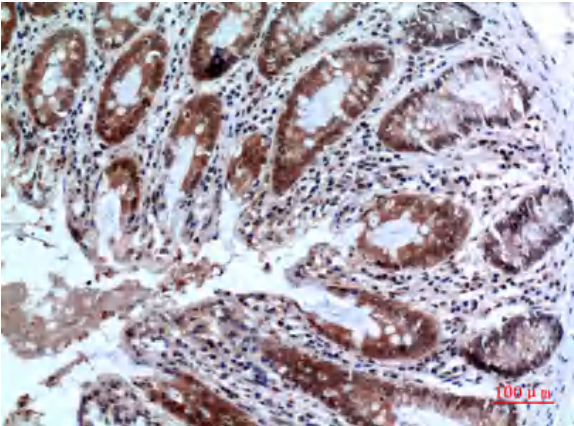
Immunohistochemical analysis of paraffin-embedded human-tonsilla, antibody was diluted at 1:100



Immunohistochemical analysis of paraffin-embedded human-tonsilla, antibody was diluted at 1:100



Immunohistochemical analysis of paraffin-embedded human-colon, antibody was diluted at 1:100



Immunohistochemical analysis of paraffin-embedded human-colon, antibody was diluted at 1:100

